

Be aware of our wide range of Mobile healthcare and shelter solutions. We plan, build and operate camps and clinics for aid workers, refugees and disaster victims. We have 25 years of experience and have provided solutions for the Thai Tsunami (Victim Identification Centre) and Earthquakes in Afghanistan India, Iran, Indonesia and Pakistan. For further references please visit www.normeca.com

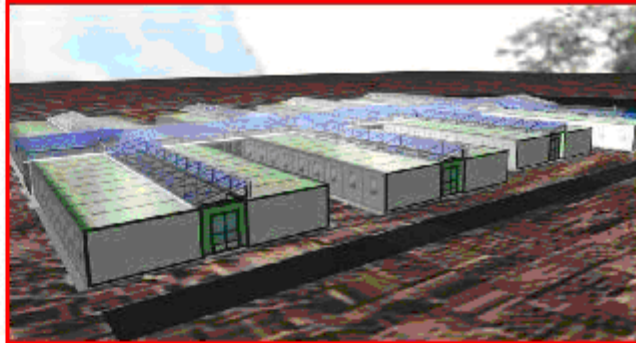
Sudan:

<http://www.normeca.no/normeca/news/Downloads/Southern%20Sudan%20Hospital%20Project.pdf>

Our solutions in flat packed containers are long lasting, economical solutions that may be set up rapidly in almost every condition. The ready clinics and hospitals hold very high standards when it comes to appearance and functionality.

Categories: Office Container-

product
number:
product name:



description:

Size		
	Dimensions	MM
External	Length	6,055
	Width	2,435
	Height	2,591
Internal	Length	5,880
	Width	2,260
	Height	2,340
Tare Weight		KG
		2,490

SPECIFICATION DETAILS:

1)BASE:

Frame-construction: 3 mm hot galvanized steel profile; 4 welded (container) corner castings with dimensions according with ISO norms. In color RAL9010

Floor: 18 mm PS Board, water resistant, free of formaldehyde (E1); 2.0mm synthetic floor covering, welded seams; water soluble adhesive, environment friendly. Fire rate: BS476

Floor base: 0.5 mm galvanized sheet metal.

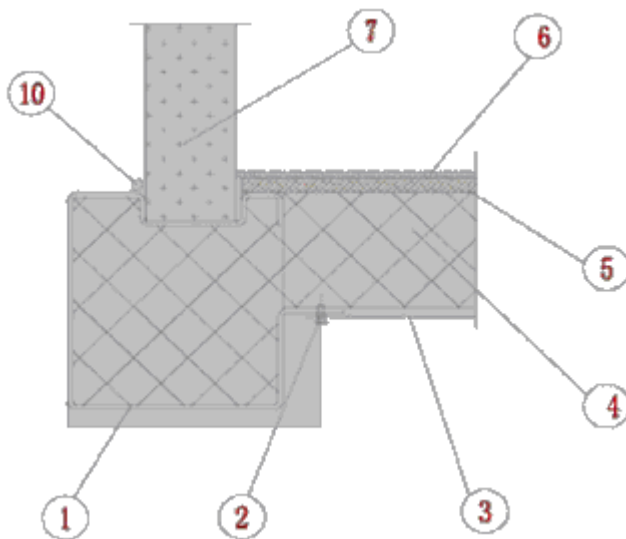
Load bearing capacity: 3.0kN/m² working load..

Insulation: 100 mm Mineral Wool (density 38-40 kg/m³ ; flash point class A-not flammable; smoke density class Q1-low smoke emission, in accordance with NORM B 3800).

K-value: 0.34 W/m² K.

Fire Rating: 30 minutes (BS 476) Tested method: LPS1208

1	Bottom Rail	5	18mm PS board (BS 476)
2	rivet	6	3mm PVC floor
3	0.5mm Hot Galvanized Steel	7	60mm Mineral Wool Wall
4	100mm Mineral Wool Insulation	8	
9		10	sealant



2) ROOF:

Frame construction: 3mm welded steel profile; 4 (welded) container castings, dimensions in accordance with ISO norms, in color RAL9010

Load bearing capacity: 3.0N/m²

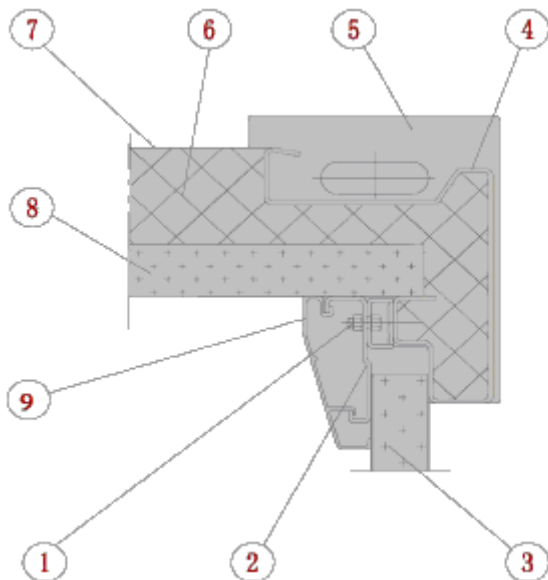
Roof covering/interior: 0.5mm galvanized painting steel both side and Mineral Wool foaming 60MM in the middle, color: white in side and out side, white is available ;

Insulation: 60 mm Mineral Wool (density 38-40 kg/m³). To avoid cold bridges,

K-value: 0.30 W/m² K.

Fire Rating: 30 minutes (BS 476) Tested method: LPS1208

1	Screw	6	Mineral Wool Insulation 100mm
2	Basket Plate	7	0.5mm Hot galvanized Roof
3	60mm Mineral Wool Wall	8	40mm PS Panel
4	Tap rail	9	PVC Cover
5	Corner Casting		



3) CORNER POSTS

Profile: Cold rolled 4.0 mm steel profile.

Fitting: The four corner posts are fitted with the base frame and the roof frame with a screwing. In this manner C I L C Module-Containers are collapsible and can be transported in packages.

Color: RAL9010

4) WALL PANELS:

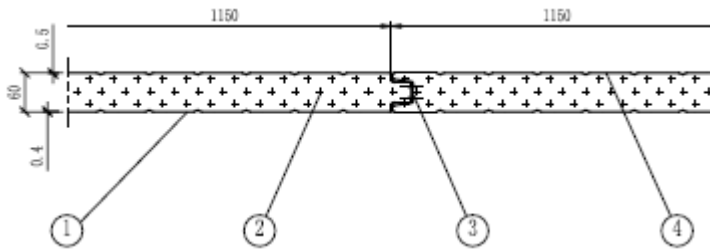
Exterior cladding: profiled galvanized sheet metal, PVC overlaid, 0.5 mm..

Interior cladding: profiled galvanized sheet metal, PVC overlaid, 0.4 mm.

Insulation: 60MM Mineral Wool (density 38-40 kg/m³)

Load bearing capacity: 0.6 Kn/m

1	Corrugation galvanized painting steel In color RAL9002	3	Rubber sealing
2	60MM Mineral Wool insulation	4	0.5mm corrugation painting steel In color RAL9002



K-value: $0.25W/m^2 K$.

Fire Rating: 30 minutes (BS 476) Tested method: LPS1208

Wind Rate: at 150 Km. / Hour

5) SURFACE PRESERVATION:

All steel profiles will be fully abrasive shot blasted and coated with a primer prior to assembling, all sheet metals will be hot-dipping zinc galvanized.

6) PAINTING/COATING:

All steel profile will be hot dipped galvanized (45 μm)

Epoxy zinc primer: min 40 microns

PU coating: min 50 microns

Total coating: D.F.T : Min 90microns

All zinc galvanized sheet metals are PVC overlaid in standard colors.

7) WINDOWS.

Window Specification / Construction

The specification of the windows is provided below. The buyer should confirm

Frame Material	Drawing / Data Sheet	Window Dimensions (nominal)	Quantity	Operation	Glazing Type	Glazing Thickness (mm)	U Value $W/m^2 K$	Features
Aluminum	Supplier to provide	885mm x 1200mm	2	Tilt & Turn	Double	NO	Not > 1.60	Alu. Rolling Shutters with mosquito

8) EXTERIOR DOORS:

The specification of the doors is provided below. The buyer should confirm

Position	Description	Door Dimensions (nominal)	Qty	Ways	Fire Rating	U Value $W/m^2 K$	Door Lock	Vision Panel	Auto Door Closer
Main Door	Steel door	810mm x 2000mm	1	1 way	FP30	Not > 0.65	Cylinder Lock	NO	YES

9) ELECTRICAL INSTALLATION:

Options Chinese standard or purchaser buys in local.

The cost is not included in standard

All, electrical components are supplied but due to container configuration,

Electric cabling is concealed and resistant specification. All parts will be supplied with VDE 100 regulation.

Technical data:

Voltage: 220 V, 50~60 Hz

Joint: Exterior connection supplying accord to Chinese norm sunken in the roof frame. Electric male plug 32 A 220V – with 3pin

Inner distribution system: NyM-J cables of suitable dimensions, flush-mounted

Incoming switch: insulators / busbars, of appropriate rating, with main shut-off switch

Outgoing circuits: automatic circuit breakers $\geq 20A$, with short-circuit and over

Load protection

Circuits; separate for lighting and socket outlets, in PVC ducts and for AC plugs and switches.

Lighting: indoor, fluorescent fixtures to achieve 200 lux at 1000mm above floor;

Out door: waterproof bulkhead fittings, energy saving bulbs, equiv to 100W , one at each end of unit.

Sockets 4 x16A duplex

Inner distribution system: Surface mounted, 3 ϕ , 4- wire , enclosed in PVC ducting

Protection: protective current switch (40/4E-0.03A), automatic fuses (B-characteristics) of suitable power (10A, 16A)

Earthing: 1 galvanized strip iron earth electrode (2.5*4 mm) with fastening.

It is the responsibility of the buyer/ lessee to arrange for the Earthing installation on site.

Equipment

1. Support two 220V fluorescent fixed in the ceiling
2. Support one low noise 220v fan fixed in the wall 2
3. There are have a open hole and frame for assembly the Air-condition in the future.
4. Other equipment will fix by the owner according his requirement such as switch, socket, network ware socket, phone socket, and all the line will be connect by the owner. There are have the pipes installed for easy go thought it for all the line.

10)SITE WORK AND ERECTION:

Any individual container should always be mounted on either wooden or concrete foundation bearers (6bearers). The same applies to the combining of several **Module-Containers** in a cluster where units must be positioned over concrete bearers or concrete slabs. Foundation parameters and frost depths would be subject to local demands and soil conditions. Level foundations are necessary for problem-free positioning and friction-free erection of any combination. For assembling please read the appropriate mounting instructions.

11) HANDLING

With overhead rope, 60° (4 corners), forklift, container-lift.

12) TRANSPORTATION:

Four (4) units **Module-Containers** can be stacking as a ISO container, for easy to transport and moving.

13) POSSIBILITIES OF CONTAINER MOUNTING

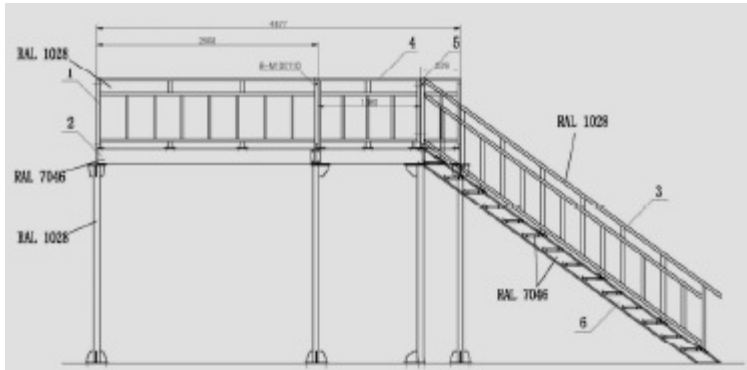
- On a flat solid surface
- On point foundations (concrete cubes, dimensions 30/30/30cm, 6 pcs/20' container)
- On band foundations (concrete band, 30cm wide, on the container circumference).

14 . Walkway:

The walkway design and provide around the fist level of the modular building accommodation construction , the walkway is to be provide in steel , the steel sections to be prefabricated in section which can be transported in the container and assembly at site. The walkway and stairs will be all around the Modular Building and are tied together by proper bolting, this result in bracing action in the longitudinal direction , the stairs in both directions will also give bracing action , additional to this in the longitudinal direction bracing are provided at the staircase , the design is done as per British

Code BS – 5950. Please refer annexure 1 for the design of the columns, stringers, plating and secondary's for the walkway and the stairs and design sketches.

The design payload: 500kg/m².



15. Pumping:

a) Water distribution System (option)

Hot & Cold water distribution shall consist of PN 10 -16 reticular polythene pipes with brass pressure joints and threaded connectors at utilization points. Piping shall be surface mounted with heavy duty collars and fittings.

Exterior connection to mains shall be provided by one 1" threaded male connection linked to the inlet by a PP pipe Φ 32/ 5.4. Exposed water pipes shall be lagged with pre-formed closed cell foam mats to prevent freezing.

b) Sewerage and Drainage (option)

In unplasticized polypropylene pipes (grey color code) with bell -and -spigot joints with neoprene rubber gaskets, complete with bends, reductions and fixing accessories. Pipes shall be securely fixed to module and led to the designed exit point for connection to the exterior sewerage mains. Shower trays shall be installed 200 mm clear of finished floor to accommodate drains and piping.

Floor of module shall be fitted with one stainless steel gutter in front of shower cubicles, and with minimum 2 EA floor drains, siphon type with chromium plated grille, each connected to drainage outlet pipe. All drains of washbasins shall be connected to mains through siphon type traps.

Perforations of floor plate shall be caulked with a permaelastic polyurethane sealant.

All drainage pipes running on exterior walls shall be lagged in preformed closed cell expanded foam to prevent freezing. In turn, lagging shall be protected by an easily accessible galvanized sheet metal casing painted with exterior quality paint to match adjacent surfaces.

c) Hot Water Boiler (option)

Hot water shall be supplied by a 300 Lt. electrical water boiler, 400V/ 7.500 W heating coils complete with intercepting valve, safety overpressure valve and adjustable thermostat. A.O Smith brand. Hot water boiler shall be firmly bolted to floor of unit with the interposition of rust proofed metal plates.

d) Sanitary fittings

Sanitary fittings shall be installed in Ablution modules in the number and position shown on drawings, stoutly secured to walls and floors as required to withstand transportation of modules and intense rough usage, with the use of heavy duty chromium plated brass screws and galvanized steel brackets. Sanitary fittings shall include:

- WC in vitreous china, with resin coated plastic seat and cover and wall mounted flush cistern, Asian type or western type confirmed by client.

- Urinals in vitreous china, wall mounted, with chromium plated press button flusher and wall mounted partitions size 600 x 1000 mm in 40 mm thick standard toilet partition panels with anodized plastic lipping and connection frame.
- 1.2 mm. thick Stainless Steel pressure formed shower trays, with wall mounted cubicles partitions size 800 x 1800 mm in 40 mm thick galvanized sheet metal sandwich panels with polyurethane core with anodized aluminum lipping and connection frame. Shower curtains on DN 30 chromium plated rods fixed to panels;
- Vitreous china washbasins 450 mm. wide, with floor resting column;
- single lever tilt-and-turn chromium plated brass Hot & Cold water faucets with ceramic disc and flow limiter set to 8 lt./min., 3 bars static pressure seal, guaranteed for 300.000 cycles, 1/100 °C thermal shock;
- single lever tilt-and-turn chromium plated brass Hot & Cold water shower mixer with ceramic disc, thermostatic control set to 38 Deg. C and flow limiter set to 8 lt./min., 1.50 m. long chromium plated flexible shower head set with wall mounted hanging rod, 3 bars static pressure seal, guaranteed for 300.000 cycles, 1/100 °C thermal shock;
- die cast ABS plastic towel racks and soap trays,
- Stainless steel mirrors with mounted with shelf over washbasins.

e) Shower: the Shower pool design by CILC, 3 shower pool on one base with PVC shower all, the shower room door is foldable, size 900x900mm. The top shower is stainless.

f) BASIN: ceramic washbasin with tap



Mobile Clinics and Dental Clinics in standard containers may be transported by air, sea and road. Our solutions provide a wide range of capabilities. Equipped with e.g. a doctor's office, laboratory and an office unit, the qualified staff may perform:

- Normal health care services
- Minor surgery
- Mother-child
- Gynaecology
- Vaccination.

The solutions may be modified to meet any other needs.





